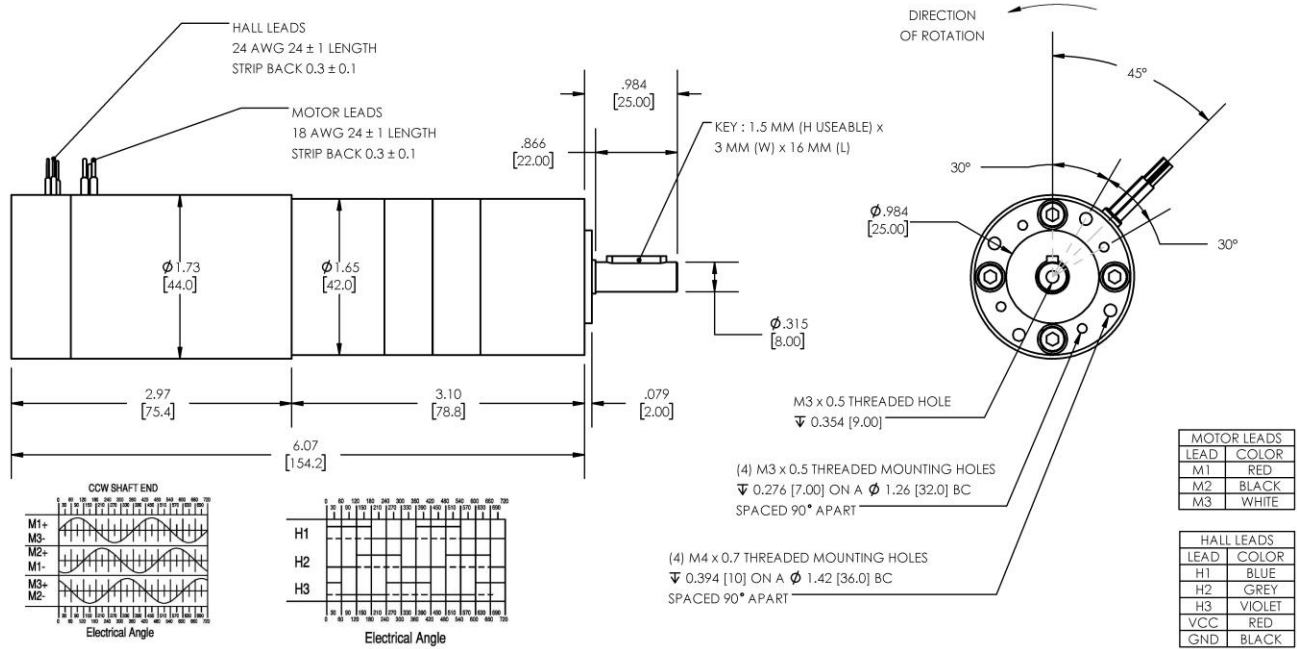


Model Number:

MMP BL44-297D-48V GP42-035



DIMENSIONS ARE INCHES [MM] UNLESS OTHERWISE STATED

PLANETARY GEARMOTOR OUTPUT PARAMETERS:	VALUE	UNITS	TOLERANCE
Gearhead Ratio (exact)	34.97 : 1		
Gearhead Shaft Output Speed (at full-load)	174	RPM	MAX
Gearmotor Rated Continuous Torque	33	In-Lbs	MAX
Gearmotor Rated Peak Torque	133++	In-Lbs	----
Gearhead Standard Backlash	57	Arc Minutes	MAX
Gearhead Efficiency	75%	----	----
Output Shaft Radial Load Capacity	52	Lbs	MAX
Output Shaft Axial Load Capacity	18	Lbs	MAX
Gearmotor Total Weight	1.9	Lbs	MAX

++ All Peak Torque values are dependent upon duty. Contact our sales office for details.

DC MOTOR PERFORMANCE PARAMETERS:	VALUE	UNITS	TOLERANCE
Rated DC Voltage	48	DC VOLTS	----
Rated Continuous Current	2.2	AMPERES	----
No-Load Speed	6720	RPM	+/- 15%
Rated Speed	6097	RPM	+/- 15%
Rated Continuous Power Out	90	WATTS	+/- 15%
Rated Continuous Torque	20	OZ-IN	----
Peak Torque (motor only)	145	OZ-IN	----
No-Load Current	0.14	AMPERES	10%
Back EMF Constant (Ke)	7.1	V/KRPM	+/- 10%
Torque Constant (Kt)	9.5	OZ-IN/AMP	+/- 10%
DC Armature Resistance	2.10	OHMS	+/- 15%
Armature Inductance	1.69	mH	+/- 15%
Armature temperature	155	DEG. C	MAX

NOTES:

- ENCODER & BRAKE OPTIONS AVAILABLE – [FOLLOW THIS LINK FOR DETAILS](#)
- NEMA MOUNTING FLANGE OPTION AVAILABLE – [FOLLOW THIS LINK FOR DETAILS](#)

MIDWEST MOTION PRODUCTS, INC

DESIGN, MANUFACTURING & DISTRIBUTION - MOTION CONTROL EQUIPMENT

www.midwestmotion.com

email: sales@midwestmotion.com